



# Major Projects Safety Incident Alert

<b>Incident Type:</b> Days Away – Critical (Disabling Injury)	<b>Incident Date:</b> 19 November, 2008
<b>Project:</b> SAP – L4 Modifications	<b>Location:</b> Clearbrook Station, Minnesota
<b>Distribution:</b> Internal (US / CAN) / External	<b>Safety Alert Number:</b> MPSIA402-2008

## Description of the incident:

The operator of a Caterpillar 315C track excavator climbed into the excavator. The Pilot Control Lever was engaged in the “safe” position. As he turned to position himself into the seat a hole in his jacket became caught on the left side boom control lever. Unaware of this, he bent over to release the Pilot Control Lever which enabled the controls. As he bent back up, the left side boom control lever moved back causing the boom to move towards the track. At the same instant this occurred a laborer was walking in front of the track excavator from the operator’s right to left, between the bucket and the track. As a result, the laborer’s right leg was caught in a pinch point and severed above the ankle. The laborer was flown to a major hospital where an unsuccessful attempt was made to reattach the foot.



Torn operator jacket



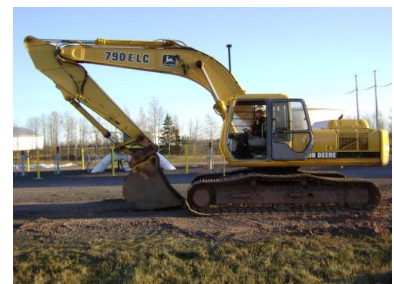
Jacket on control lever



Position of bucket prior

## Immediate or Initial Actions:

- People approaching equipment must make eye contact and receive acknowledgement of their presence from operator. They must never walk under the boom of the excavator, always be aware of the swing radius of the bucket and avoid any pinch points.
- Equipment operators must verify location of ground personnel before entering equipment and before releasing the Pilot Control Lever.
- A spotter must be designated and present when excavation work is being performed and assist equipment operators to verify location of all ground personnel before operator releases Pilot Control Lever.
- Equipment operators must ensure that controls are free and not entangled in clothing or other gear before releasing the Pilot Control Lever.
- Supervisors and inspectors shall ensure torn/tattered clothing is not worn to prevent such entanglement – CSP requires contractors to routinely inspect clothing to ensure it is kept in good condition.
- When track excavators are shut down, their boom shall be pulled all the way into the cab (as shown right)



This incident is currently under investigation.  
For more information please contact:  
Chuck Faegre, Project Safety Manager  
US Major Projects Safety Department