

# Safety & Health SPOTLIGHT

**NOTE about Username/Password:** Many of the links in *Safety & Health Spotlight* require login to the STI/SPFA website at [www.steeltank.com](http://www.steeltank.com). If you already have a username and password, log in and click "Members" on the homepage. If you don't have Member access, [contact our office](#).

## New OSHA reporting and record-keeping rule on fatalities and severe injuries effective January 1, 2015



### What you need to know

**What are you required to report under the new rule as of January 1, 2015?**

Under the new fatality and severe injury record-keeping rule, employers must report the following events to OSHA:

- All work-related fatalities
- All work-related in-patient hospitalizations of one or more employees
- All work-related amputations
- All work-related losses of an eye

Previously, employers had to report only all work-related fatalities and all work-related hospitalizations of three or more employees

### How soon must you report to OSHA?

- Employers must report work-related fatalities within eight hours of being informed of the death.
- For any in-patient hospitalization, amputation, or eye loss, employers must report the incident within 24 hours of being informed of the incident.
- Only fatalities occurring within 30 days of the work-related incident must be reported to OSHA. Further, for an inpatient hospitalization, amputation or loss of an eye, incidents must be reported to OSHA only if they occur within 24 hours of the work-related incident.

### How do you make your report?

Employers have three options for reporting the event:

## SEPTEMBER 2014 Members Only

### In This Issue

[New OSHA record-keeping rule effective Jan. 1, 2015](#)

[Managing a workplace injury](#)

[Safety booklets revised](#)

[ANSI revised hard hat standard](#)

[Free Prescription Drug Employer Toolkit](#)

[Styrene dangers](#)

[Rigging training workshop](#)

[Latest posts on the blog](#)

[Safety & Health member resources](#)

## Join our Safety & Health Forum blog!

[Click here](#)  
and sign up for RSS feed

**Should someone  
else at your  
company be  
reading Spotlight?**  
[Click here to send us name  
and email address!](#)

**FREE consulting  
services for**

1. By telephone to the **nearest OSHA Area Office** during normal business hours.
2. By telephone to the 24-hour OSHA hotline (1-800-321-OSHA or 1-800-321-6742).
3. OSHA is developing a new means of reporting events electronically, which will be released soon and accessible on OSHA's website.

#### Who is covered by these expanded reporting requirements?

All employers under OSHA jurisdiction must report these incidents to OSHA, including employers who are exempt from routinely keeping OSHA records due to company size or industry.

#### What information are you required to report?

Employers reporting a fatality, in-patient hospitalization, amputation or loss of an eye to OSHA must report the following information:

- Establishment name
- Location of the work-related incident
- Time of the work-related incident
- Type of reportable event (i.e., fatality, in-patient hospitalization, amputation or loss of an eye)
- Number of employees who suffered the event
- Names of the employees who suffered the event
- Contact person and his or her phone number
- Brief description of the work-related incident

#### Employers do **not** have to report an event if it:

- Resulted from a motor vehicle accident on a public street or highway, unless the event happened in a construction work zone. The employer **is** required to report events occurring in a construction work zone.
- Occurred on a commercial or public transportation system (airplane, subway, bus, ferry, street car, light rail, train).
- Occurred more than 30 days after the work-related incident in the case of a fatality, or more than 24 hours after the work-related incident in the case of an in-patient hospitalization, amputation, or loss of an eye.
- Was an in-patient hospitalization for diagnostic testing or observation only. An in-patient hospitalization is defined as "a formal admission to the in-patient service of a hospital or clinic for care or treatment."
- **However**, the employer **is** required to report an in-patient hospitalization due to a heart attack, if the heart attack resulted from a work-related incident.

#### Click these links for:

- **OSHA's FAQs about the new reporting requirements.**
- **OSHA's webpage and resources about the new reporting rule.**
- **OSHA Fact Sheet on the new rule affecting reporting of fatalities and severe injuries.**

## Managing a workplace injury

Fall Conference presentation

## Members Only

### Safety & Health JIM RHUDY

jrrhudy@yahoo.com  
281-419-5839

### Steel Fabrication BILL HERDMAN

wherdman@sbcglobal.net  
317-885-1270

### Fire Codes JEFF SHAPIRO

Jeff.Shapiro@Intl  
CodeConsultants.com  
512-795-2900

## Join our LinkedIn Group



**Safety & Health Spotlight** is published quarterly for Members Only.

**Editor:** Noël Zak,  
Membership/Communications  
Manager

*Technical and other information published in Safety & Health Spotlight is provided without representations or warranties, express or implied. In particular, STI/SPFA does not warrant the accuracy of information presented from external sources.*

"Wilson Frazier was EXCELLENT!" That was the consensus of members who participated in the Safety & Health Committee presentation at the 2014 Fall Conference in late August.

You can view Wilson Frazier's presentation, "**Managing a workplace injury**" on the **Safety & Health** pages at [www.steeltank.com](http://www.steeltank.com).



STI/SPFA's Safety & Health Committee hosts a quality presentation at the Annual Meeting and Fall Conference each year. The committee also meets at these events--all are welcome to participate.

*Passionate about safety:  
Wilson Frazier, CSP,  
Director of Environmental  
Health & Safety at Caldwell  
Tanks.*

[Back to top](#)

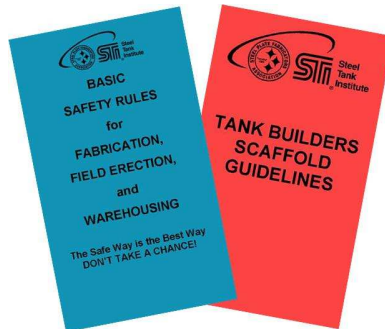
## Safety booklets revised

### 2014 editions available now

The Safety & Health Committee has spent the past year updating STI/SPFA's handy, pocket-sized safety booklets. They are a great safety orientation and training tool for your personnel.

**Click here to order the new editions:**

- **Basic Safety Rules** booklet for warehousing, fabrication and construction. This booklet serves many members as their company rules book.
- **Tank Builders Scaffold Guidelines** booklet can stand alone or compliment the Scaffold Guidelines Presentation.



[Back to top](#)

## ANSI's revised hard hat standard

### Tech Brief from ASSE

A newly-revised version of the ANSI/ISEA Z89 Standard for Hard Hats was approved in May of this year. ASSE said recently that while "there has not been any government action on this version of the standard," it's expected that it will be cited in relevant regulations.



According to ASSE, "This standard establishes minimum performance and labeling requirements for protective helmets used in industrial and occupational settings under normal temperature conditions and optionally at high and low temperatures and when

worn in the reversed position. It also includes requirements for high-visibility helmets and specifies test methods for evaluating all requirements."

[Click here for ASSE's Tech Brief on the revised Z89 Standard.](#)

[Back to top](#)

## NSC offers Prescription Drug Employer Toolkit

The number of people fatally overdosing from opioid prescription painkillers is staggering, killing 45 people each day. Many of these people are also employed, making opioid use a serious threat to employee safety.

The National Safety Council has released a guide for employers, *The proactive role employers can take: opioids in the workplace*, to help companies understand how employee prescription painkiller use or abuse could directly impact business and what employers can do to address this issue.

NSC also has a toolkit to help employers strengthen their drug-free workplace policies and help employees who may be struggling with an addiction they never intended to have.

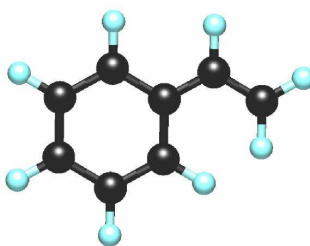
[Click here to download the free toolkit and guide.](#)

[Back to top](#)



## Styrene dangers NRC review findings

Styrene is primarily a synthetic chemical that is used extensively in the manufacture of plastics, rubber, and resins, including the resins used to make fiber-reinforced plastic (FRP).



According to OSHA, about 90,000 workers are potentially exposed to styrene. Health effects from exposure to styrene may involve the central nervous system and include complaints of headache, fatigue, dizziness, confusion, drowsiness, malaise, difficulty in concentrating, and a feeling of intoxication.

In July, the **National Research Council (NRC) published a review** of the listing of styrene in the June 2011 National Toxicology Program's (NTP) 12th Report on Carcinogens. The report, which was prepared by a panel of scientists selected by NRC, stated that "compelling evidence exists to support a listing of styrene as, at a minimum, reasonably anticipated to be a human carcinogen."

Exposures to styrene are addressed in specific OSHA standards for general industry and construction employment.

[Click here for OSHA standards about styrene.](#)

[Back to top](#)

## Rigging training workshop

**May 13 in Kansas City**

The Crosby Group is widely recognized in the manufacturing sector for providing superior lifting and rigging training, as well as lifting products.



We are pleased to announce that **The Crosby Group** will present an **eight-hour rigging training workshop for STI/SPFA members**--both Fabricators and Affiliates--on May 13, 2015, in Kansas City, Missouri. The fee for this workshop will be very affordable (just enough to cover expenses).

The Crosby Rigging Training Workshop will cover:

- Basic rigging standards
- Evaluating the rigging and common problems
- Estimating load weight
- Rigging hardware identification and inspection
- Shackles and hooks
- Links, rings, eye bolts, swivels
- Sling selection and application
- Lifting clamp selection

Mark your calendars for **May 13** and watch for more information from **STI/SPFA**.

[Back to top](#)

## Latest posts on S&H blog

### STI/SPFA's Safety & Health Forum



Here's another resource: Our Safety & Health Forum blog for Members Only. Recent posts:

- CSB warns about danger of hot work on tanks containing biological or organic material.
- Free app for tracking lightning in the field.
- Don't get caught!
- Impact of marijuana's legal status on workers' comp claims.

[Click here to go to the Safety & Health Forum.](#)

Need a username and password? [Contact the office for help.](#)

[Back to top](#)

## For members only:

# Safety & Health Resource pages

Find a broad array of information and resources for your safety program on STI/SPFA's **Safety & Health Committee website pages**.

If you already have a username and password, log in and click "Safety & Health Pages" on the Welcome page. If you don't have Member access, **contact our office**.

Our website is a valuable resource for you as a safety and health professional. Check out these useful links:

- **Safety & Health FORUM:** Recall notices, training resources, personnel incidents and news. Join in the discussions.
- **WebNet Safety Training:** Train employees inexpensively, at your plant, for a full year via the Internet
- **Training Resources:** Materials for use by Member companies for safety training sessions--more than 100 presentations and posters
- **OSHA Issues:** Updates to OSHA programs of current interest
- **Tank Use Mishaps:** Monthly online newsletter with stories of mishaps involving tanks and petroleum
- **Safety Awards:** Information about STI/SPFA's Safety Award of Excellence and the Safety Award of Achievement

[Back to top](#)