

Safety & Health SPOTLIGHT

NOTE about Username/Password: Many of the links in *Safety & Health Spotlight* require login to the STI/SPFA website at www.steeltank.com. If you already have a username and password, log in and click "Members" on the homepage. If you don't have Member access, [contact our office](#).

OSHA declares national safety stand-down on falls

According to OSHA, falls from elevation continue to be the leading cause of worker fatalities in construction, accounting for 269 of 775 construction fatalities recorded in 2012.

To help prevent future incidents, OSHA has declared the **week of June 2, 2014**, a national safety stand-down on falls. OSHA encourages employers and workers to take time during that week to discuss fall prevention topics such as ladder, scaffolding, and rooftop safety.

After the stand-down, employers can provide feedback to OSHA and receive a participation certificate.

OSHA's website has numerous resources and guidance on conducting a successful stand down, including several videos. Visit www.osha.gov/StopFallsStandDown/index.html for more information.



Secretary Perez on
Stand-Down to Prevent Falls in Construction

MAY 2014 Members Only

In This Issue

[Top five fabricator safety concerns](#)

[Welding hazards to avoid](#)

[Article Title](#)

[What's wrong with this picture?](#)

[Risk Management Workshop at Fall Conference](#)

[OSHA fines tank parts manufacturer](#)

[OSHA temp worker compliance](#)

[OSHA revises power press standard](#)

[Latest posts on S&H Forum](#)

[Your safety & health resources](#)

Join our Safety & Health Forum blog!

[Click here](#)
and sign up for RSS feed

Should someone
else at your
company be
reading
Spotlight?

[Click here to send us](#)

--Article courtesy ASSE's *Professional Safety* magazine

Fall prevention resources for Members Only

These training resources are available on the Safety & Health pages of www.steeltank.com:

- [Fall Protection Usage and Proper Tie-Off Points](#)
- [Fall Protection Presentation, J. Mastrucci](#)
- [Tank Builders Scaffold Guidelines and presentation](#)

And many more! Explore and share your Members Only training resources as you prepare for the national stand down on falls.

**name and email
address!**

**FREE consulting
services for
Members Only**

**Safety & Health
JIM RHUDY**

jrrhudy@yahoo.com
281-419-5839

**Steel Fabrication
BILL HERDMAN**

wherdman@sbcglobal.net
317-885-1270

**Fire Codes
JEFF SHAPIRO**

Jeff.Shapiro@IntlCodeConsultants.com
512-795-2900

Top five safety concerns

Jim Rhudy polls fabricator members

Earlier this spring, STI/SPFA safety consultant Jim Rhudy polled fabricator member companies, asking them to name their top five shop fabrication safety problems. There was a 50% response to the survey. The top five:



1. **Material handling:** rigging the load, use and care of rigging equipment (clamps and slings) and moving the load (proper use of overhead crane).
2. **Fall protection.**
3. **Machine guarding** (portable grinders and bench grinders).
4. **Personal protective equipment:** wearing safety glasses (and face shields), gloves, hearing protection.
5. **Housekeeping:** cleaning up is part of the job, e.g. putting away equipment and assuring it is disconnected/turned off.

The Safety & Health Committee will consider these member concerns as they plan future programs for the Fall Conference and Annual Meeting.

[Back to top](#)

Welding hazards to avoid

Welders face an array of hazards. Awareness of the most common welding hazards helps to ensure a safe and proper work environment.

An article by John Petkovsek in the April issue of *Occupational Health & Safety* lists and describes

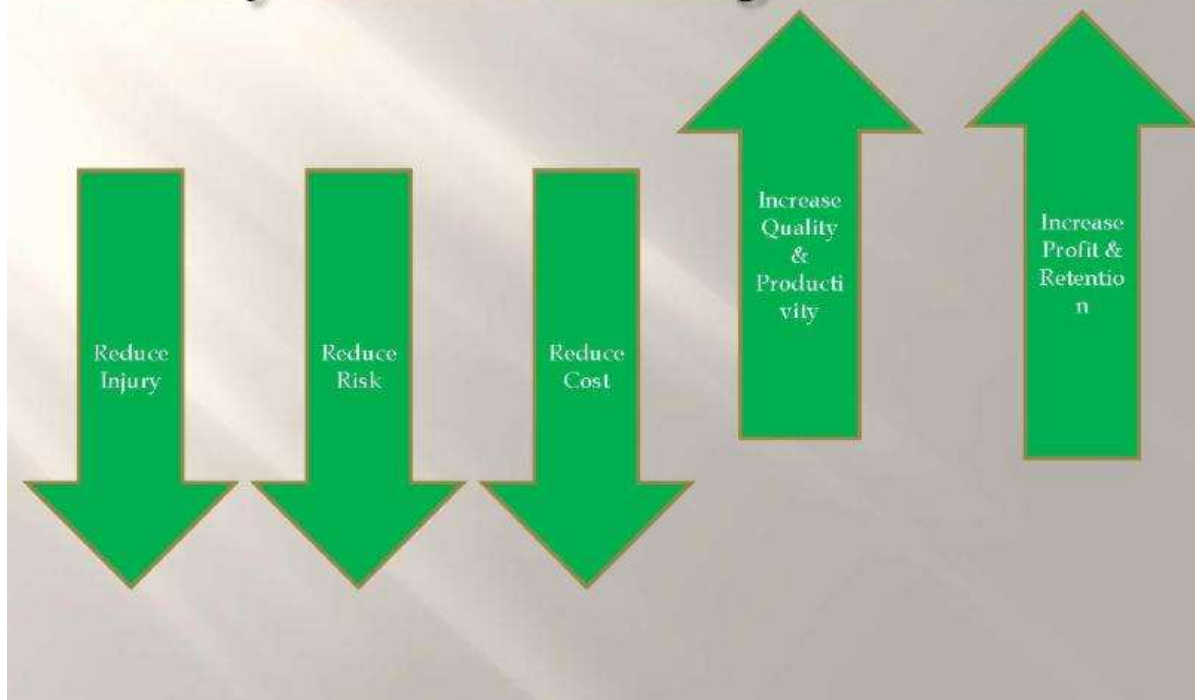
several hazards of which all welders and employers should be aware, including: electric shock, fumes and gases, fire and explosions, and injuries from insufficient PPE.

[Read the complete article here.](#)

[Back to top](#)



Why Measure Leading Indicators



Leading indicators: latest safety model

At the 2014 Annual Meeting in San Diego, Ken Wade, CESP, Taylor Forge, presented ***How to Predict and Influence Future Accident Rates***, an overview of the "leading indicators" safety model. The full presentation, with material not seen at the Annual Meeting, is posted on the STI/SPFA website.

Jim Rhudy, STI/SPFA safety consultant, notes that **"behavior-based safety has essentially run its course. Leading indicators is the current preferred model for involving employees in safety."**

Ken's presentation explains that leading indicators are **activities or measures intended to predict future results, unlike models that rely on past accident rates** or "getting caught" by OSHA. He explains how to select high-impact leading indicators so that your safety program can be proactive rather than reactive.

Whether you heard Ken in San Diego or not, view his in-depth presentation on leading indicators on

STI/SPFA's website. This is a members-only service, so you'll need to login. [Click here](#) if you need help.

[Click here for Ken Wade's How to Predict and Influence Future Accident Rates](#)

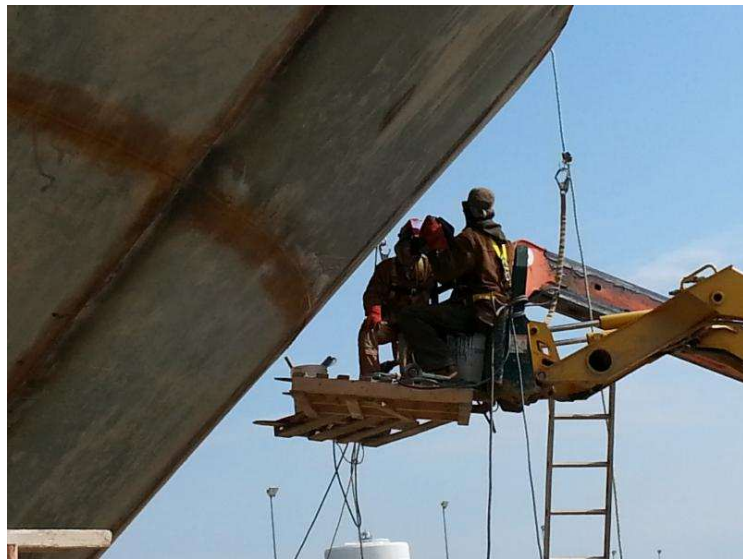
[Back to top](#)

In the industry or not, ladder safety is vital

By Robert Clouse (Phoenix Tank),
Chairman, STI/SPFA Safety & Health Committee

These photos illustrate that unsafe ladder practices occur both inside and outside the steel fabrication industry.

Working on and around ladders is hazardous. Ladders are a major source of injuries, even fatalities, and many ladder-related injuries result in "lost time" for the employer.



(Note: This is not a Phoenix Tank job!)

What's wrong here, outside the industry?

- People underneath work area who could be injured by dropped tools.
- A-frame ladder improperly used in folded position.
- Not using three points of contact.

What's wrong here, *inside* our industry?

- Sharp edge needs padding in case of falls.
- Safety line needs padding over sharp edge.
- No hard hats in use.
- Ladder leaning on Bobcat for access to overhead weld.
- Working off Bobcat forks is illegal by OSHA rule and against manufacturer recommendations.
- Underside of pallet is broken.

[Click here for ladder use reminders](#)

[Back to top](#)

Risk Management Workshop at 2014 Fall Conference

SAVE THE DATE: August 26, 1-5 pm

Don't miss this NEW offering from the Safety & Health Committee! This half-day workshop will feature authoritative speakers and presentations on safety and risk topics that affect your business every day. More info coming in June!



Who Got Fined--and why

OSHA's "local emphasis program" tags tank parts manufacturer

Thanks to *Safety Compliance Alert* newsletter, May 5, 2014, for the following article:



It pays to keep an eye on the hazards OSHA is currently focusing on--both nationally and on the local level. Case in point: The safety agency recently inspected this site under its regional emphasis program on fabricated metal products and discovered workers exposed to dangerous struck-by hazards.

A fine of \$46,000 was levied on a Texas tank parts manufacturer for 17 serious violations, including failure to:

- Provide required machine guarding
- Regularly inspect overhead cranes, hoists, hooks and slings
- Develop and implement lockout/tagout procedures
- Provide strain relief for flexible electrical cords
- Provide forklift training and certification

[Back to top](#)

OSHA Temp Worker Compliance Bulletin

OSHA has created a resource, Temporary Worker Initiative Bulletin No. 1: Injury and Illness Record Keeping Requirements, providing information on compliance with safety and health requirements when temporary workers are employed. Requirements for both the staffing agency and the host employer are included. How to identify who is responsible for recording work-related injuries and illnesses of temporary workers on the OSHA 300 log is also included.

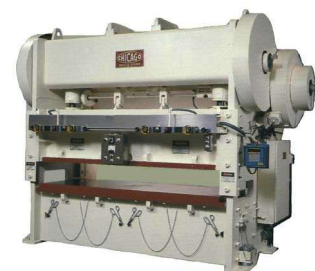
[Click here for OSHA's bulletin on temp workers.](#)

[Back to top](#)

OSHA revisions to mechanical power press standard

Paperwork reduction is intent

OSHA has made two revisions to its Mechanical Power Presses Standard. These changes were effective February 14, 2014.



In his article in the January 2014 issue of *The Fabricator*, author Stephen Barlas explained these changes:

"Paragraph (e)(1)(i) currently requires employers to "inspect all parts, auxiliary equipment, and safeguards of mechanical power presses on a periodic and regular basis," and to maintain certification records of these inspections.

- "The main revision to this paragraph is to **explicitly** require that employers perform necessary maintenance or repair, or both, on all of the parts, auxiliary equipment, and safeguards of each press, not just the clutch/brake mechanism, anti-repeat feature, and single-stroke mechanism delineated in existing paragraph (e)(1)(ii). The latter mechanical features are subject to weekly inspections according to regulations and will continue to be, even with the revision to that paragraph. In short, OSHA is emphasizing that the inspections must be done on "a consistent, systematic schedule."
- "In addition, OSHA is revising this paragraph to remove the requirement that employers prepare certification records for detailing weekly inspections and tests. However, the agency is retaining the requirement that employers maintain some sort of certification records for maintenance work."

OSHA states that this rulemaking is part of the Department of Labor's initiative to reduce paperwork burden, and will eliminate 613,600 hours of employers' paperwork burden, while maintaining employee protection.

[Back to top](#)

Latest posts on S&H blog

STI/SPFA's Safety & Health Forum

Here's another resource: Our [Safety & Health Forum](#) blog for Members Only. Recent posts:



- **Owner faces jail:** worker didn't have protection in fatal fall
- **Rocky Brands Recalls Georgia Boot Steel-Toed Shoes** Due to Compression Hazard
- **Don't spill this cup!** Post-accident and reasonable suspicion drug testing in the era of legal marijuana use
- **Good catch!** Harness pre-inspection pays off

[Back to top](#)

STI/SPFA's

Safety & Health resource pages

Find a broad array of information and resources for your safety program on STI/SPFA's [Safety & Health Committee website pages](#). If you already have a username and password, log in and click "Safety & Health Pages" on the Welcome page. If you don't have Member access, [contact our office](#). Our website is a valuable resource. Check out these useful links:

- [Safety & Health FORUM](#): Recall notices, training resources, personnel incidents and news. Join in the discussions.
- [WebNet Safety Training](#): Train employees inexpensively, at your plant, for a full year via the Internet
- [Training Resources](#): Materials for use by Member companies for safety training sessions--more than 100 presentations and posters
- [OSHA Issues](#): Updates to OSHA programs of current interest
- [Tank Use Mishaps](#): STI/SPFA monthly online newsletter with stories of mishaps involving tanks and petroleum
- [Safety Awards](#): Information about STI/SPFA's Safety Award of Excellence and the Safety Award of Achievement

[Back to top](#)



Join our LinkedIn Group



Safety & Health Spotlight is published quarterly.
Editor: Noël Zak, Membership/Communications Manager

Technical and other information published in Safety & Health Spotlight is provided without representations or warranties, express or implied. In particular, STI/SPFA does not warrant the accuracy of information presented from external sources.

[Back to top](#)