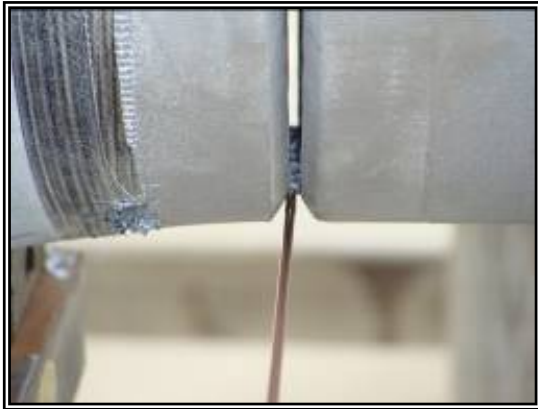


Puncture Injury in Close Proximity to the Eye:

During the process of welding tacks on an 18" pipe, a welder left a TIG rod, approximately 2 foot long, in place when leaving the immediate area. At that time, a pipefitter was sweeping in the immediate area and stooped down to check the fit for adequate spacing. The end of the TIG rod punctured the pipefitter in the area between the right eye and nasal airway, resulting in significant injury.



Immediate Reminders and Recommendations:

- Never leave welding rods protruding from welds unattended.
- Limit the length of rods when possible.
- If a welding rod becomes stuck or lodged in the weld, ensure crew members in the area are aware of the hazard and a method of protection is put in place until the hazard can be eliminated.
- Evaluate area before acting and/or performing tasks to ensure potential hazards are recognized and controlled.
- Employ danger tape, cap end covers and / or other similar means to identify this and similar hazards when they exist during working activities