

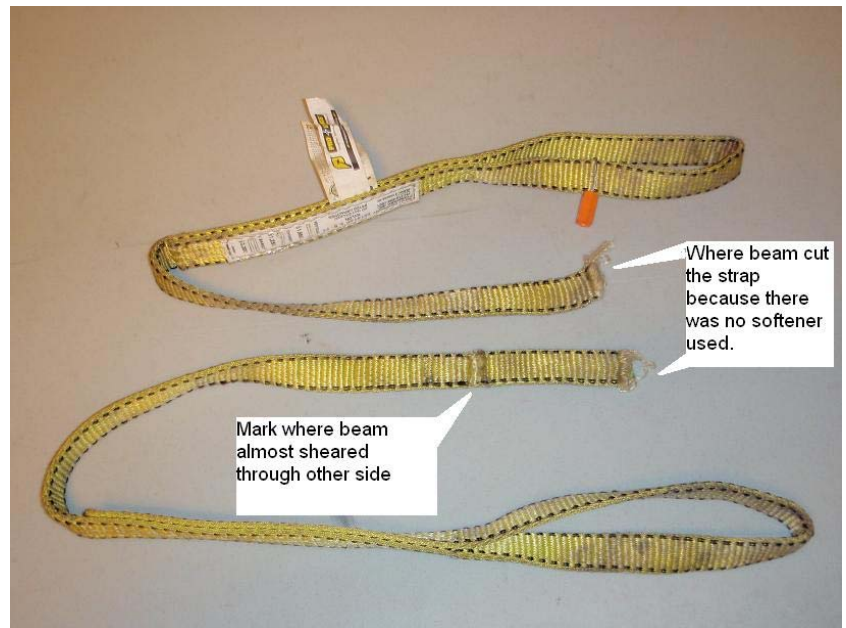
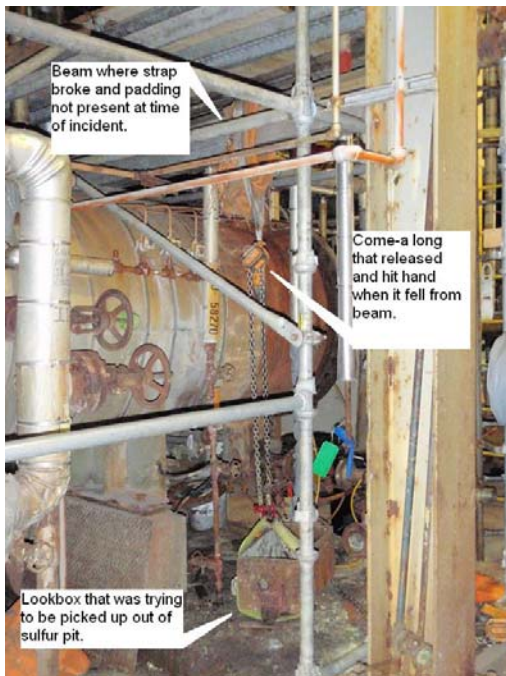


Type of Incident: Line of Fire causing injury to hand

Incident Date: 7/18/11

Brief Account of Incident:

A 1" strap was placed over an "I" beam (without any type of softeners) to aid in lifting look out box from top of sulfur pit. Lookout box pipe was embedded in concrete. The lookout box did not budge and more force was applied to come-along. The resulting force of the come along cut the strap due to sharp corners of the beam. The strap cut through causing come-along to fall on worker's hand



What Went Wrong?

- JSA did not contain enough information to pre plan task
- Softeners were not used to protect sharp corners of beam
- Pipe was in a sleeve which was attached to the box; detail was overlooked
- Too much force was used with no give to pipe

Lessons Learned:

- More detail including inspection of area should be given for JSA
- Ensure material being demo'd is able to move freely with out excessive force on come-along
- Rigging should be protected against sharp edges
- Sleeve should have been cut first to remove the box, then sleeve could have been removed separately